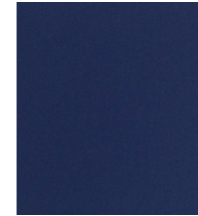
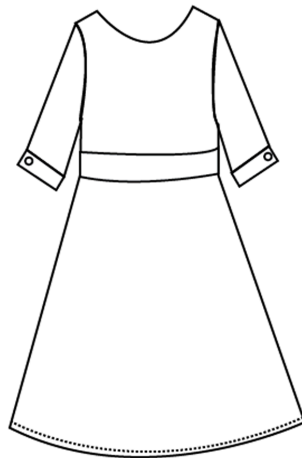


VIEW

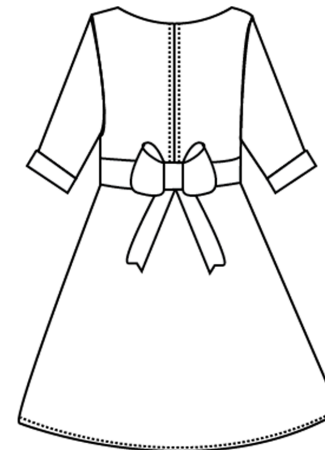
Prototype sample #	2	Size Range:	Children 2-6
Style #	2	Sample Size:	5
Season	Fall 2015	Designer:	Faith Faulkner & Nicole Hogan
Style Name:	Bow Dress	Date First Sent:	11/5/2014
Fit Type:	Relaxed	Date Revised:	11/8/2014
Brand:	Lagniappe	Fabrication:	100% cotton
Status:	Prototype	Vendor:	Lagniappe LLC



Front

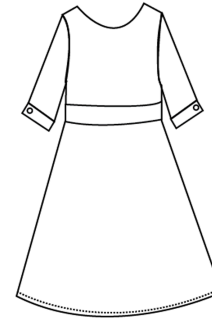


Back

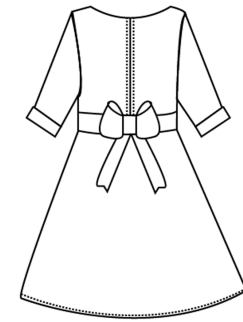


DETAILS VIEW

Prototype sample #	2	Size Range:	Children 2-6
Style #	2	Sample Size:	5
Season	Fall 2015	Designer:	Faith Faulkner and Nicole Hogan
Style Name:	Bow Dress	Date First Sent:	11/5/2014
Fit Type:	Relaxed	Date Revised:	11/8/2014
Brand:	Lagniappe	Fabrication:	100% Cotton
Status:	Prototype	Vendor:	Lagniappe LLC



Front

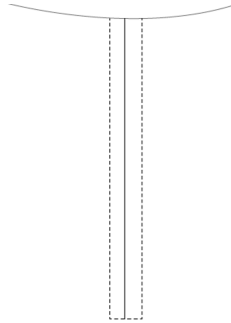


Back

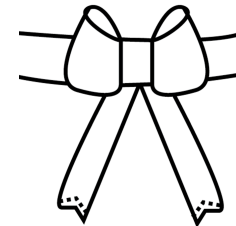
Cuff Details



Zipper Details

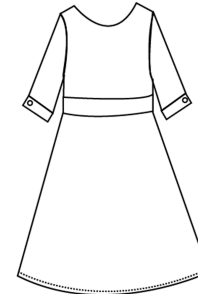


Back Bow Details

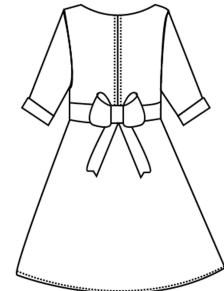


DETAILS VIEW

Prototype sample #	2	Size Range:	Children 2-6
Style #	2	Sample Size:	5
Season	Fall 2015	Designer:	Faith Faulkner & Nicole Hogan
Style Name:	Bow Dress	Date First Sent:	11/5/2014
Fit Type:	Relaxed	Date Revised:	11/8/2014
Brand:	Lagniappe	Fabrication:	100% Cotton
Status:	Prototype	Vendor:	Lagniappe LLC



Front



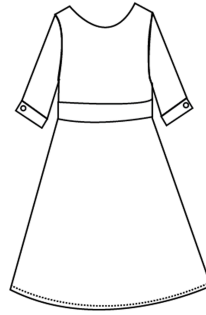
Back

Hem Details

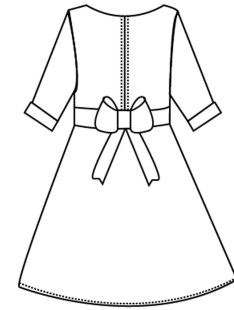


POINTS OF MEASURE

Prototype sample #	2	Size Range:	Children's 2-6
Style #	2	Sample Size:	5
Season	Fall 2015	Designer:	Faith Faulkner & Nicole Hogan
Style Name:	Bow Dress	Date First Sent:	11/5/2014
Fit Type:	Relaxed	Date Revised:	11/8/2014
Brand:	Lagniappe	Fabrication:	Cotton 100%
Status:	Prototype	Vendor:	Lagniappe LLC



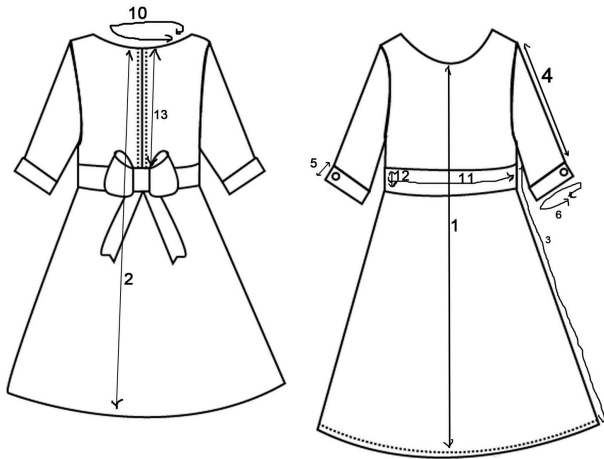
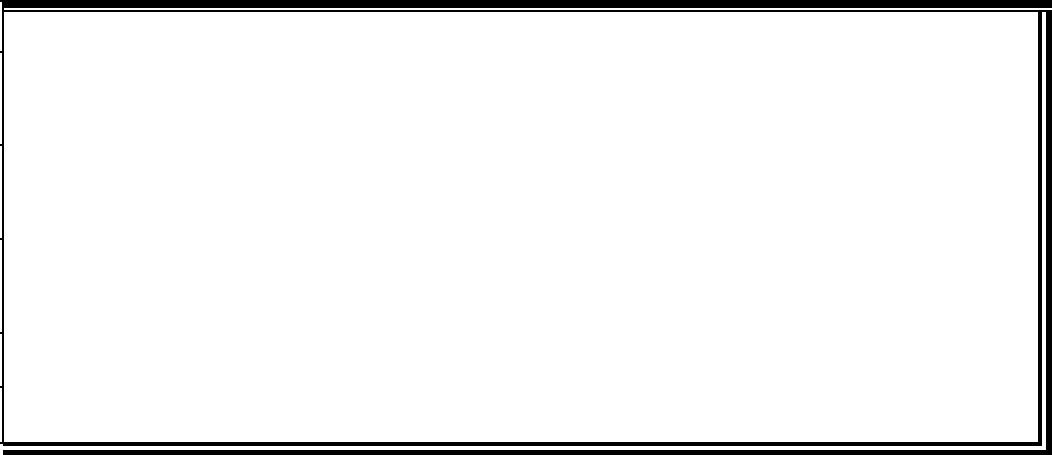
Front



Back

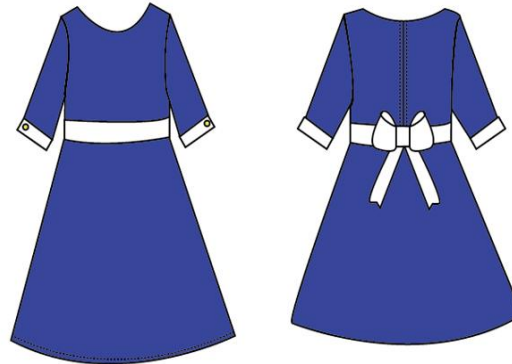
Code	Dress Spec Measurements	Tol (+)	Tol (-)	Size 5
1	Center Front Length	½"	½"	24"
2	Center Back Length	½"	½"	23 ½"
3	Side Seam	½"	½"	19 ¾"
4	Sleeve Length	½"	½"	13 ¼"
5	Cuff Width	½"	½"	2 ½"
6	Cuff Circumference	½"	½"	10"
7	Button	½"	½"	5/8"
8	Buttonhole	½"	½"	6/8"

9	Placket Length	1/2"	1/2"	2"
10	Neckline Circumference	1/2"	1/2"	25"
11	Waist Band Length	1/2	1/2	65"
12	Waist Band Width	1/2	1/2	2 1/8"
Style Spec Measurements				
13	Zipper	1/2	1/2	9"



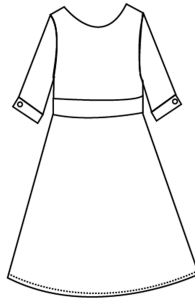
Back

Front

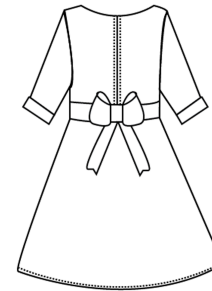


GRADE RULES

Prototype sample # 2
 Style # 2
 Season Fall 2015
 Style Name: Bow Dress
 Fit Type: Relaxed
 Brand: Lagniappe
 Status: Prototype



Front



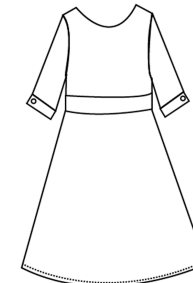
Back

Sample Size

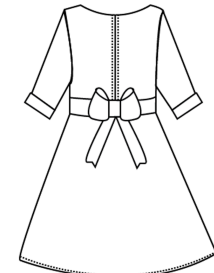
Code	SPEC MEASUREMENTS	Tol (+)	Tol (-)	3	4	5	6			
	Center Front Length	½	½	23"	23 ¼"	24"	24 ½"			
	Center Back Length	½	½	23 ½"	23 ½"	23 ½"	23 ½"			
	Side Seam	½	½	19 ¾"	19 ¾"	19 ¾"	19 ¾"			
	Sleeve Length	½	½	13 ¼"	13 ¼"	13 ¼"	13 ¼"			
	Cuff Width	½	½	2 "	2"	2"	2 "			
	Cuff Length	½	½	12 ¼"	12 ¼"	12 ¼"	12 ¼"			
	Cuff Circumference	½	½	10"	10"	10"	10"			
	Placket Length	½	½	2"	2"	2"	2"			
	Neckline Circumference	½	½	24 ½"	24 ¾"	25	25 ¼"			
	Waist Band Length	½	½	65"	65"	65"	65"			
	Waist Band Width	½	½	2 1/8"	2 1/8"	2 1/8"	2 1/8"			

BILL OF MATERIALS (page 1 of 2)

Prototype sample #	2	Size Range:	Children's 2-6
Style #	2	Sample Size:	5
Season	Fall 2015	Designer:	Faith Faulkner & Nicole Hogan
Style Name:	Bow Dress	Date First Sent:	11/5/2014
Fit Type:	Relaxed	Date Revised:	11/8/2014
Brand:	Lagniappe	Fabrication:	Cotton 100%
Status:	Prototype	Vendor:	Lagniappe LLC



Front

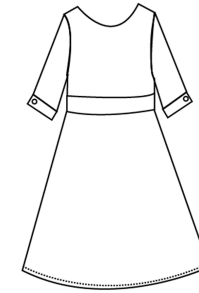


Back

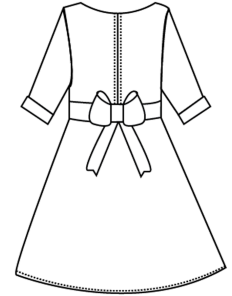
Item/ Description	Content	Placement	Supplier	Width/ Weight/Size	Finish	Qty
Navy Woven Cotton	100% Cotton	Main fabric, (bodice front, back and sleeve)	Joann Fabrics	Light weight	Navy	2 yards
Buttons	(Metal Blend)	For cuff links	Joann Fabrics	1 1/8 inch	Gold Metallic	5
Thread Body	100% Polyester	Main seems	Joann Fabrics	T2 all purpose	White/Navy	10-14 SPI
White Woven Cotton	100% Cotton	Trims and waist line bow	Joann Fabrics	Light weight	White	1/2 yard
Interfacing Fusible Cuffs	100% Polyester	Cuffs	Joann Fabrics	Light weight	-	1/4 yards
Brand Label	Woven Printed	Side Seam	Joann Fabrics	3 inches	-	1
Care & Content Label	Nylon	Side Seam	Joann Fabrics	2.5 style	-	1

BILL OF MATERIALS (page 2 of 2)

Prototype sample #	2	Size Range:	Children's 2-6
Style #	2	Sample Size:	5
Season	Fall 2015	Designer:	Faith Faulkner & Nicole Hogan
Style Name:	Bow Dress	Date First Sent:	11/5/2014
Fit Type:	Relaxed	Date Revised:	11/8/2014
Brand:	Lagniappe	Fabrication:	Cotton 100%
Status:	Prototype	Vendor:	Lagniappe LLC



Front



Back

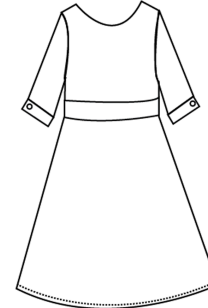
Item/ Description	Content	Placement	Supplier	Width/ Weight/Size	Finish	Qty
Vendor Hand tag			Hobby Lobby		-	1
Packaging	Red Corrugated Cardboard	-	Paper Mart	4"D, 25"L, 15"W	-	1
Gift w/ Purchase	Gift Content Varies	-	In house production	Gift Weight and Size Varies	-	1
Box for Gift	White Corrugated Cardboard	Inside Main Box	Paper Mart	Varies with Gift	-	1
Tissue Paper	Red	Around Garment	Paper Mart	-	-	3 Sheet s
Sticker	Custom Die Cut	Front of Package	Paper Mart	4"x4"	-	1
	Clear Sealing Tape	-	Paper Mart	2" W	-	8"

COLORWAY SUMMARY

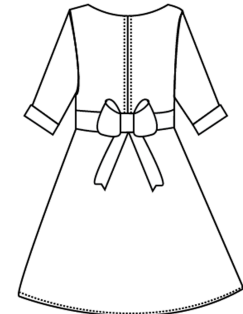
Color #	Main Body Color	Zipper Tape	Zipper Finish	Button
789	Navy			
101	White	White	Gold Metal Teeth, non separating, lapped	
112	Gold			Gold Metal, shank

CONSTRUCTION PAGE

Prototype sample #	2	Size Range:	Children's 2-6
Style #	2	Sample Size:	5
Season	Fall 2015	Designer:	Faith Faulkner & Nicole Hogan
Style Name:	Bow Dress	Date First Sent:	11/5/2014
Fit Type:	Relaxed	Date Revised:	11/8/2014
Brand:	Lagniappe	Fabrication:	Cotton 100%
Status:	Prototype	Vendor:	Lagniappe LLC



Front



Back

Cutting Information:

Matching:

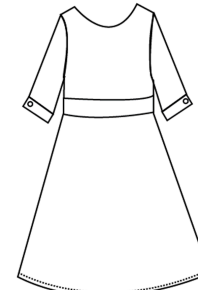
Stitches per inch (SPI): 10-14 SPI

Area	Description	Join Stitch	Seam Finish	Topstitch	Inter-Lining
Left Side Seam dress	Join	Ssae 301	Press Open,		
Right Side Seam dress	Join	Ssae 301	Press Open,		
Waistband	Attach to side seams and center front	Ssae 301			
Left Shoulder seam	Join	Ssae 301	Press Open, finish		
Right Shoulder Seam	Join	Ssae 301	Press Open, finish		
Left Sleeve	Join Seams	Ssae 301	Press Open, finish		
Right Sleeve	Join Seams	Ssae 301	Press Open, finish		
Left Sleeve	Attach Sleeve to Armhole	Ssae 301	Press Open, finish		
Right Sleeve	Attach Sleeve to Armhole	Ssae 301	Press Open, finish		
Cuff	Attach to lower sleeve	Ssae 301	Press Open, finish		
Buttonholes	6/8" wide	Ssae 304			
Button Shank	5/8" wide	Hand-stitch			
Neckline	Attach facing to neck	Ssae 301	Press Open, clip		
Hem	Hem	Turned	1 inch		

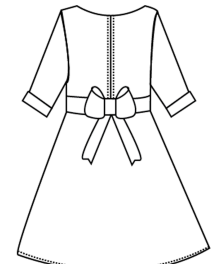
		under, hand stitch			
--	--	-----------------------	--	--	--

LABELS AND PACKING

Prototype sample #	2	Size Range:	Children's 2-6
Style #	2	Sample Size:	5
Season	Fall 2015	Designer:	Faith Faulkner & Nicole Hogan
Style Name:	Bow Dress	Date First Sent:	11/5/2014
Fit Type:	Relaxed	Date Revised:	11/8/2014
Brand:	Lagniappe	Fabrication:	Cotton 100%
Status:	Prototype	Vendor:	Lagniappe LLC



Front



Back

LABELS



SIZE
GIRLS 5

MADE IN CHINA
100% COTTON
RN 35055
MACHINE WASH
NON CHLORINE BLEACH
TUMBLE DRY LOW
COOL IRON

HANG TAG

Lagniappe

Bow Dress
Vendor: Lagniappe
Style: 2
Color: Navy/White
Price: \$65.00

LABEL PLACEMENT

Brand Label center back Neckline
Content and Care Label center back neckline, below brand label
Hangtag side seam below waistband

PACKING

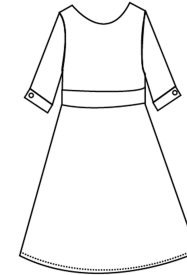




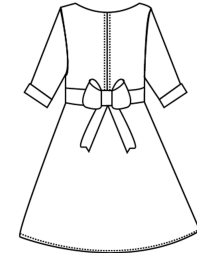
**Ships in White Cardboard Box D 4", 25"L, 15" W, 3 Sheets
Red Tissue paper around garment, gift with purchase inside
each box, Lagniappe Di-cut sticker 4x4" on box, clear tape
sealing box closed**

MATERIALS SPECIFICATIONS

Prototype sample #	2	Size Range:	Children 2-6
Style #	2	Sample Size:	5
Season	Fall 2015	Designer:	Faith Faulkner & Nicole Hogan
Style Name:	Bow Dress	Date First Sent:	11/5/2014
Fit Type:	Relaxed	Date Revised:	11/8/2014
Brand:	Lagniappe	Fabrication:	100% Cotton
Status:	Prototype	Vendor:	Lagniappe LLC



Front



Back

Location	Fiber	Fabrication	Vendor	Width/ Weight/Size	Style #	Finish	Qty
Main fabric, (bodice front, back and sleeve)	Cotton	100%	Joann Fabrics	Light Weight	2	Navy	2 yards
Waistband and Cuffs	Cotton	100%	Joann Fabrics	Light Weight	2	White dots pattern	1 yd
Buttons	Medal Blend (Foe Cufflinks)		Joann Fabrics	1 1/8 inch	2	Gold Metallic	5
Thread Body	Polyester	100%	Joann Fabrics	T2 all purpose	2	White/Navy	10-14 SPI
Interfacing Fusible Cuffs	Polyester	100%	Joann Fabrics	Light Weight	2	Fusible	1/4" yards
Care & Content Label	Cotton	100%	Joann Fabrics	Light Weight	2	White	3"